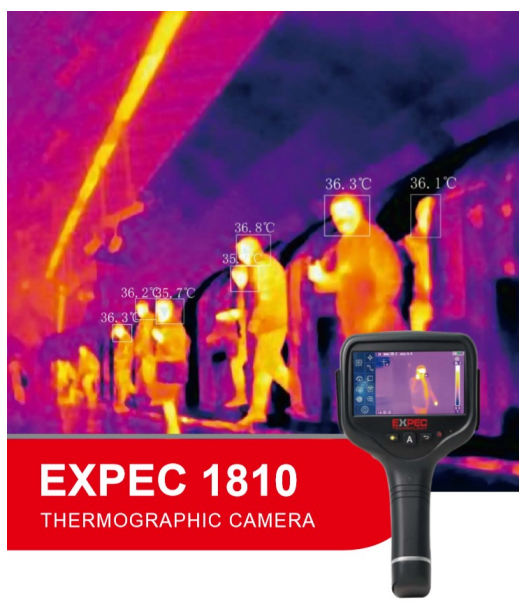


EARLY DETECTION SAVES LIVES!



TECHNICAL INFORMATION

Mode	EXPEC 2810A
Detector Type	VOX long wave infrared staring un-cooled focal plane array
Resolution	384 x 288
Spectrum	8-14 μm
Image Frame Rate	50Hz
NETD	0.05°C @ 30°C
FOV/Minimum Imaging Distance	24 x 18/0.3m
IFOV	1.3mrad
Focus Mode	Manual
Digital Zoom	1-8x continuous digital zoom
Visible Digital Camera	5 million pixels visible with LED light supplement lamp
Display Screen	4.3" TFT touch screen
Image Mode	Infrared, visible, picture-in-picture image fusion, MFI
Image Control	Palettes (no less than 12 kinds), image adjustment (automatic/manual)
Temperature Range	+25°C ~ +45°C
Accuracy	±0.3°C
Screening Mode	20 targets, line, or area. Capture of the highest and the lowest temperature, average temperature measurement, isothermal analysis, temperature difference measurement, temperature alarm (sound, colour); number of targets, lines and areas can be customised and expanded.

Emissivity Calibration	Emissivity can be adjusted from 0.01 to 1, or calibrate the emissivity with a predefined material emissivity meter
Temperature Calibration	Automatic, according to the input of background temperature
Atmospheric Transmittance Calibration	Automatic, according to the distance, relative humidity, environmental humidity
Alarm	Colour alarm for high or low temperature
Storage Capacity	16G micro SD card. Scalable to 128G
Image Storage Mode	Both infrared and visible images
Infrared Image Format	Original infrared measurement images with JPEG; Original infrared measurement videos with MPEG 4
Visible Image Format	JPEG; visible video recording with MPEG 4
Transmission	USB 2.0, VIDEO, SD card
Battery Type	Replaceable and rechargeable lithium battery; Supporting direct charging; outlet charging or car charging
Shock Resistance/Vibration	25g, IEC68-2-29/ 25g, IEC68-2-6
Protection Degree	IP54
Weight	0.85kg (including battery and standard lens)
Size	245 x 125 x 120mm
Tripod Installation	UNC 1/4" - 20